

Chloë Lamb

2014

CRICKET FINE ART

requests the pleasure of your company at the

PRIVATE VIEW

of

RECENT WORKS

an exhibition of new paintings by

CHLOË LAMB

at

2 Park Walk, London SW10 0AD

on

Tuesday 14 October 2014

6.30 – 8.30pm

RSVP info@cricketfineart.co.uk

The exhibition continues until 25 October 2014

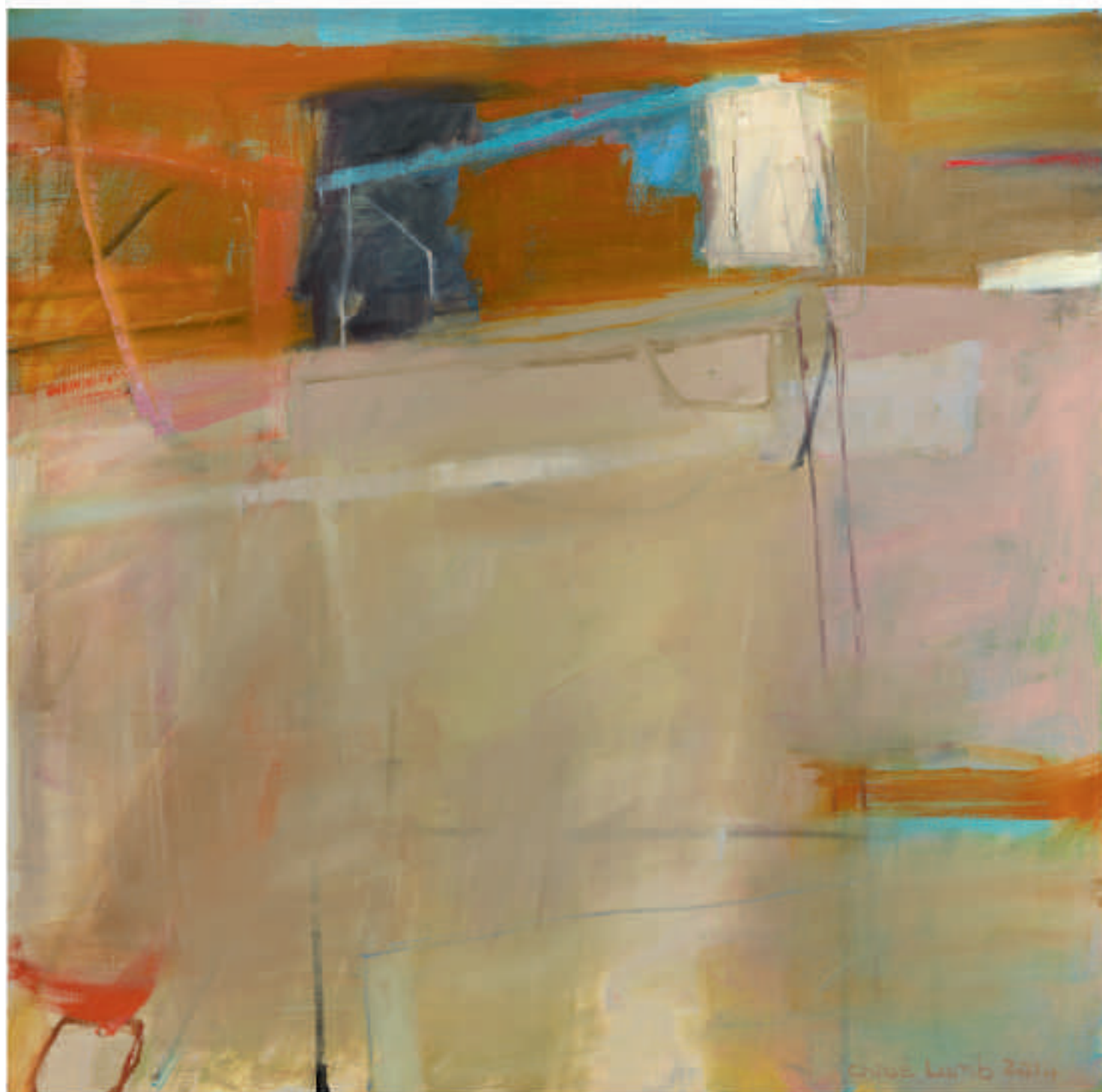
All paintings are for sale on receipt of the catalogue

The entire exhibition can be viewed at www.cricketfineart.co.uk

OPENING TIMES

Monday to Friday 10.30 am – 6.00 pm

Saturday 11.00 am – 5.00 pm or by appointment

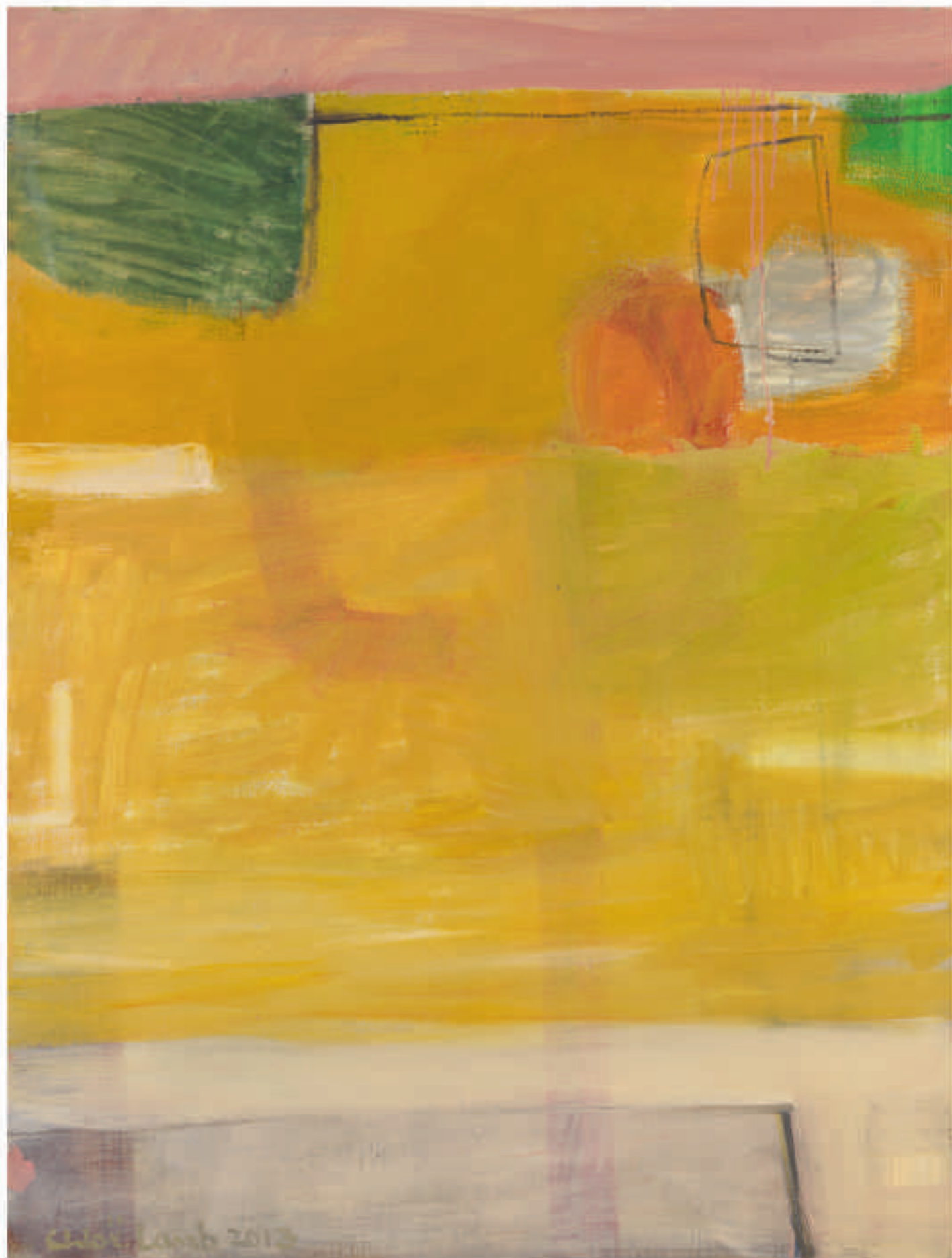








Chloe Lamb 2014

















A



B













A

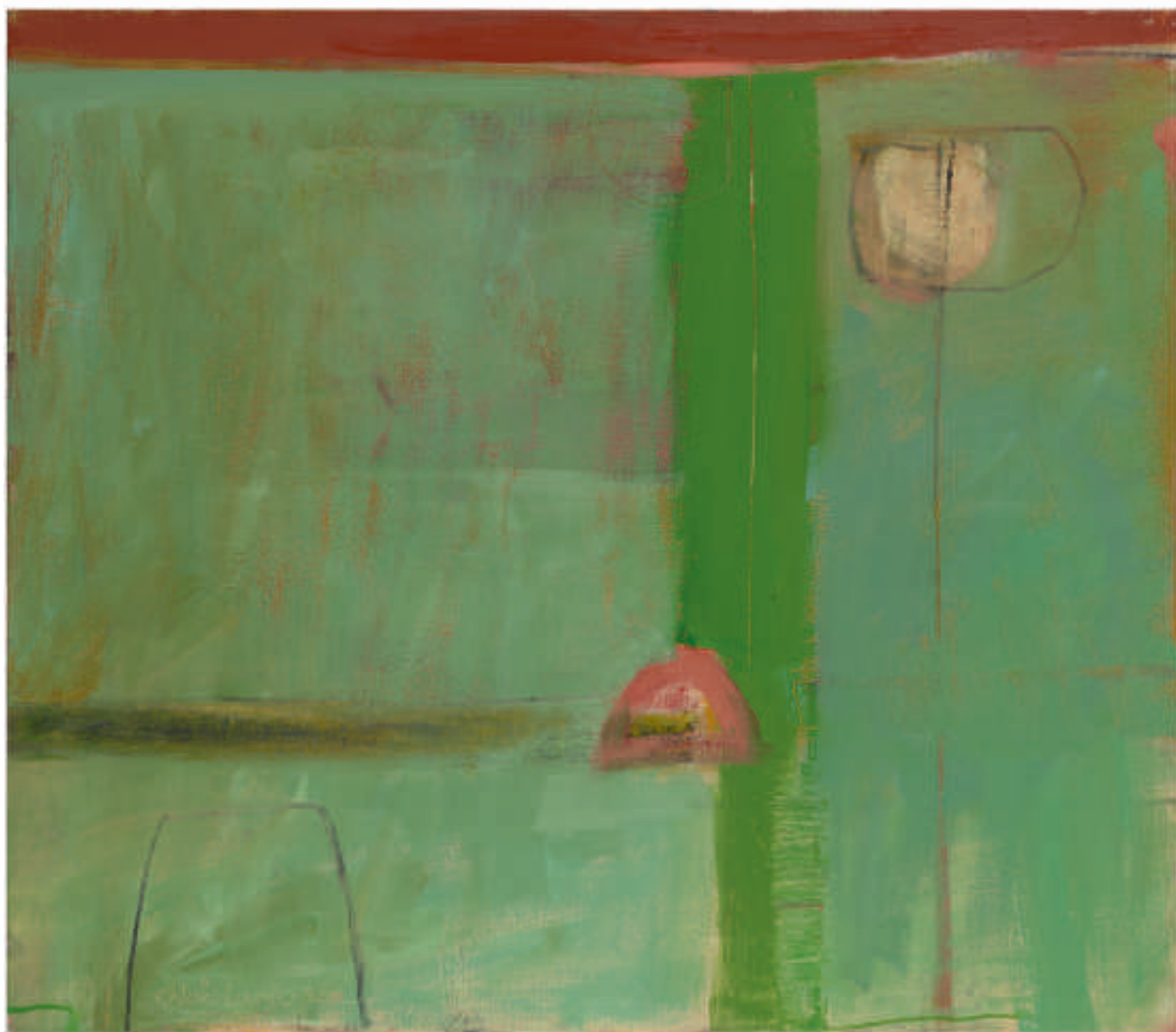


B













A



B

















A



B







A



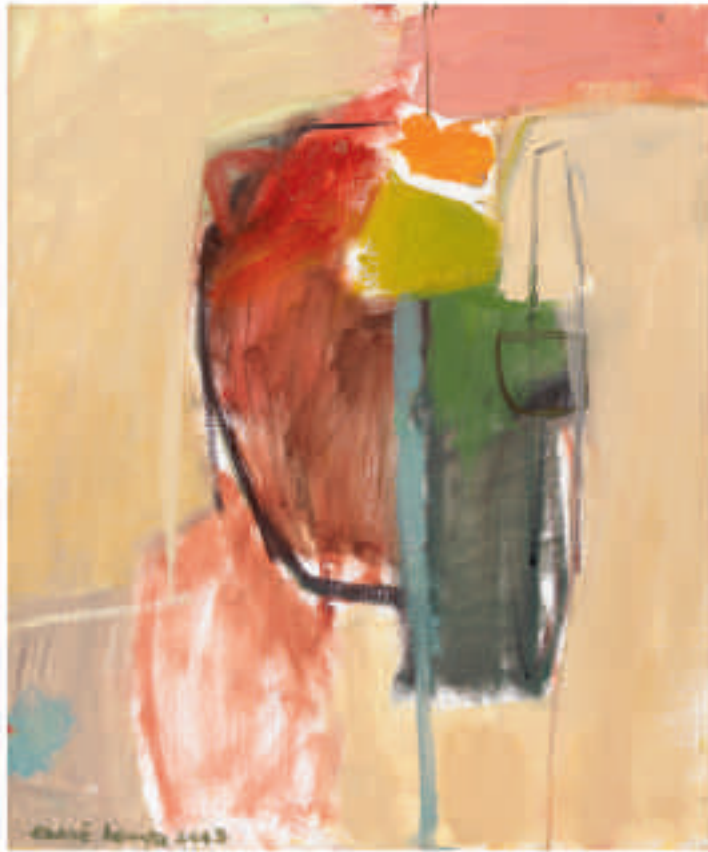
B



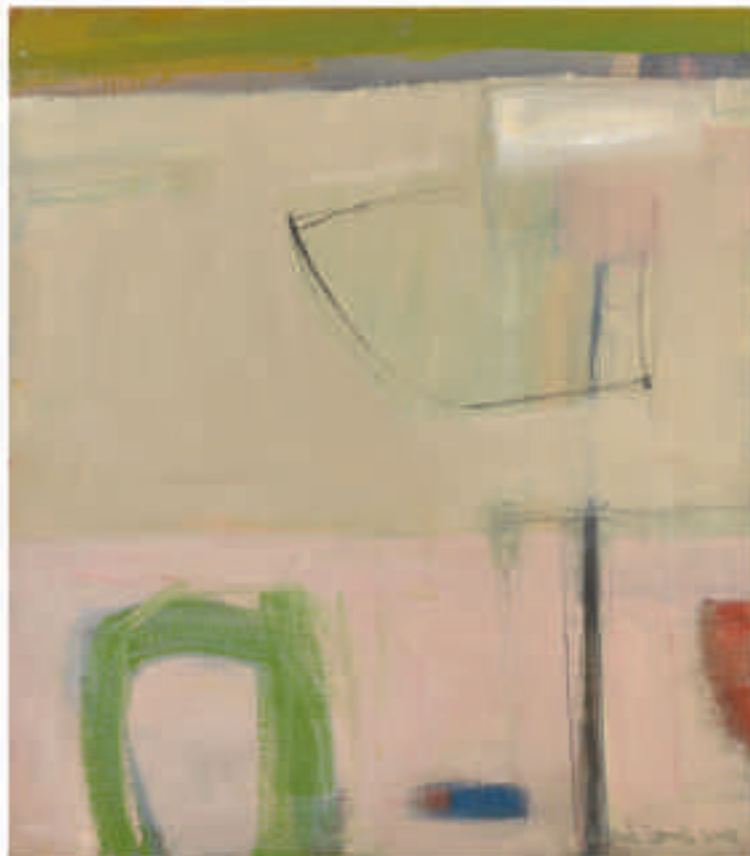
C



D



A



B





A



B



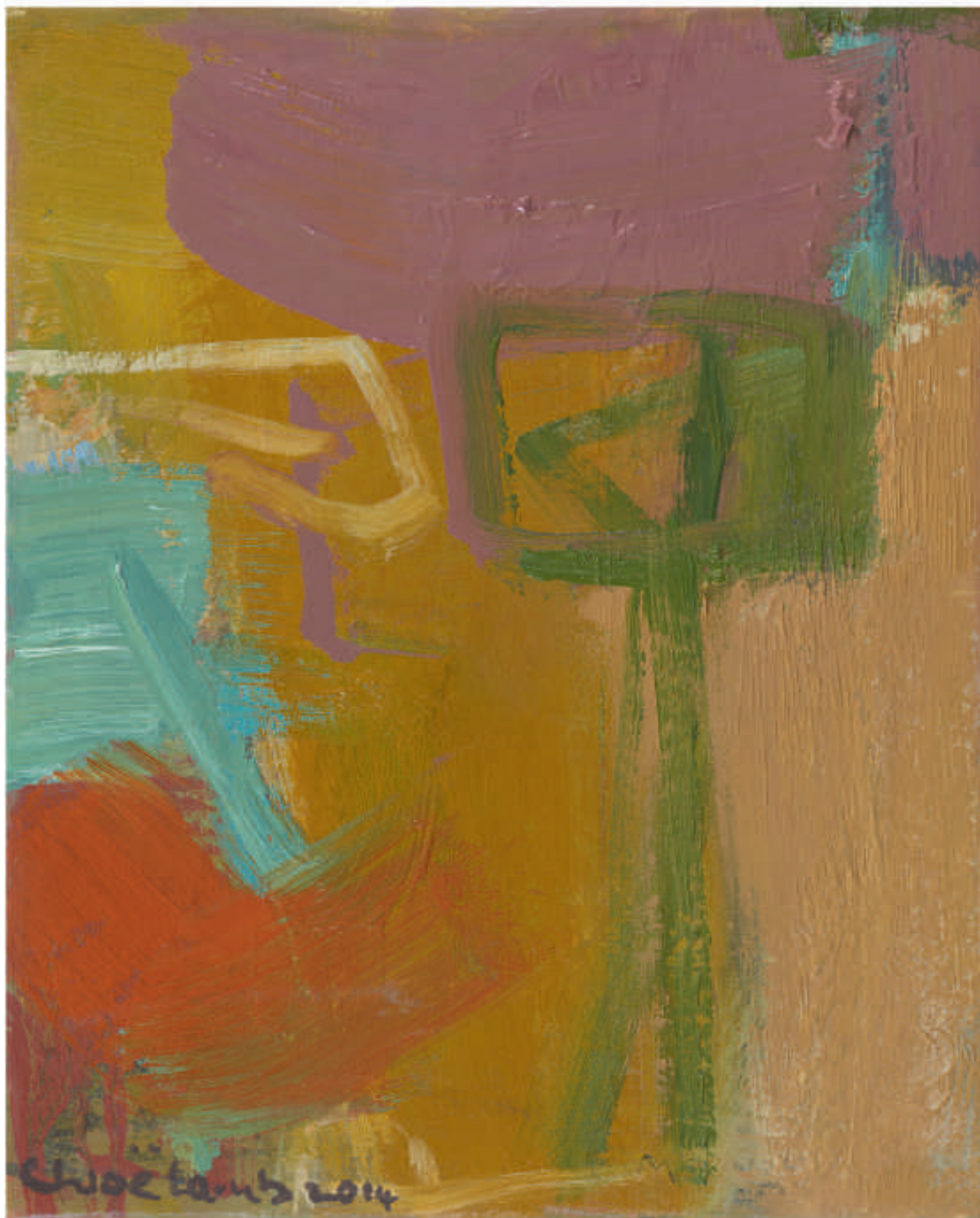




A



B



I declare an interest; I am the proud owner of a Chloe Lamb landscape dated 2008. My wife and I bought it, not because we are good friends of Chloe, but because we love the work.

“Art is not a handicraft, it is the transmission of feeling the artist has experienced” wrote Leo Tolstoy and John Ruskin said that “fine art is that in which the hand, the head, and the heart of man go together”. These quotes seem to well reflect Chloe’s work and dedication. She has a wonderful sense of colour and composition whether she is painting abstracts from the landscape that surrounds her, a still life or figures.

‘Nothing unites the English like war. Nothing divides them like Picasso’. (Hugh Mills) This still applies today and I often hear friends say “I don’t get it” when looking at a picture which does not conform to photographic reality. Contemporary art should challenge and excite and Chloe’s abstract style is, to my taste, more interesting than many of her contemporaries who record nature in every detail. Just look out of the window at the landscape with your eyes half-closed or view the English countryside from an aeroplane window. As Saul Bellow said “I feel that art has something to do with the achievement of stillness in the midst of chaos”. Chloe’s work requires the viewer to have a little imagination and to be constantly delighted when you understand what she has seen and transposed so beautifully onto canvas.

Lord Poltimore
Deputy Chairman, Sotheby’s Europe



Chloë Lamb
2014

1.	Heaven Hill, Oil on canvas 60" x 60"	£18,500
2.	Sea and Shore, November, Oil and canvas 40" x 50"	£11,000
3.	Blue Buttons, Oil on canvas, 40" x 35"	£7,500
4.	Construction, 2014, Oil on board, 30" x 20"	£3,950
5.	Yellow and Pink, 2014, Oil on canvas, 48" x 36"	£9,500
6.	Red Oxide, Oil on canvas, 50" x 50"	£14,000
7.	Flowers, April, Oil on canvas, 30" x 24"	£4,500
8.	Paths and Gangways I, Oil on canvas 24" x 30"	£4,500
9.	The Sea and the Sand, Oil on canvas, 72" x 60"	£22,000
10.	Brown and Grey, Oil on canvas, 48" x 36"	£9,500
11.	Figures with Ochre and Pink, Oil on canvas, 48" x 60"	£16,000
12a.	Doves on a Fence, Oil on canvas, 30" x 26"	£4,800
12b.	Amble Sands III, Collage on board, 30" x 40"	£7,200
13.	Heaven Field II, Oil on canvas, 50" x 50"	£14,000
14.	May Afternoon, Oil on canvas, 40" x 35"	£7,500
15.	Circle in the Sand, Oil on canvas, 30" x 26"	£4,800
16.	Paths and Gangway II, Oil on canvas, 30" x 26"	£4,800
17.	On the Bench with Doves, Oil on canvas 48" x 60"	£16,000
18a.	Beadnell Beach, Oil on board, 6 1/4 "x 23"	£2,400
18b.	On the Coast I, Collage on board, 12" x 10"	£2,100
19.	Late Evening, Oil on canvas, 40" x 35"	£7,500
20.	Black Jug, Oil on board, 30" x 20"	£3,950
21.	Heaven Field, Oil on canvas 60" x 72"	£22,000
22.	Green and Pink, Oil on canvas, 35" x 40"	£7,500
23.	Green Horizon, Oil on canvas, 60" x 48"	£16,000
24a.	August I, Oil on board, 24" x 30"	£4,500
24b.	August II, Oil on board, 30" x 24"	£4,500
25.	Doves and Grey Scarf, Oil on canvas, 40" x 35"	£7,500
26.	Yellow Pot, Oil on canvas, 30" x 26"	£4,800
27.	Circus and Sky, Oil on canvas, 60" x 60"	£18,500
28.	Amble Sands, IV, Oil and Collage on board, 40" x 30"	£7,200
29.	Pink and Blue, Oil on canvas, 40" x 35"	£7,500
30.	Rhubarb Fool, Oil on canvas, 60" x 48"	£16,000
31.	Railings and Doves, Oil on canvas, 50" x 40"	£11,000
32a.	The Heat of the Sun, Oil on canvas, 20" x 24"	£3,600
32b.	Late Afternoon, Oil and pastel on paper 27 3/4" x 19 3/4"	£3,950
33.	Beadnell Beach II, Oil on Canvas, 40" x 50"	£11,000
34.	Across the Beach, Oil and pastel on paper, 27 3/4" x 19 3/4"	£3,950
35.	June, Oil on canvas 20" x 24"	£3,600
36a.	Devon Flowers, Oil on board, 15" x 10"	£2,400
36b.	January 2014, Oil on canvas, 18" x 14"	£2,650
36c.	Bedwyn Pink II, Oil on board, 15" x 10"	£2,400
36d.	December, 2014, Oil on canvas, 18" x 14"	£2,650
37a.	June I, Oil on canvas, 24" x 20"	£3,600
37b.	Amble Sands, Oil on canvas, 40" x 35"	£7,500
38.	Longshore Drift I, Collage and Oil on board 20" x 15"	£2,950
39a.	Longshore Drift II, Collage and Oil on board, 15" x 20"	£2,950
39b.	Construction II, Collage and Oil on board, 7 1/2" x 10"	£1,850
40.	Cornflower Blue, Oil on canvas, 30" x 26"	£4,800
41.	Beach Party, Oil and Carbon on paper, 27 3/4" x 19 3/4"	£3,950
42a.	April 2013, Oil on canvas 35" x 40"	£7,500
42b.	Small Black Pot, Oil on canvas, 18" x 14"	£2,650
43.	Picnic, Oil on canvas, 10" x 8"	£1,950

CRICKET FINE ART

2 Park Walk, London, SW10 0AD

Tel: 020 7352 2733 Mobile: 07778 568 367

email: info@cricketfineart.co.uk website: www.cricketfineart.co.uk